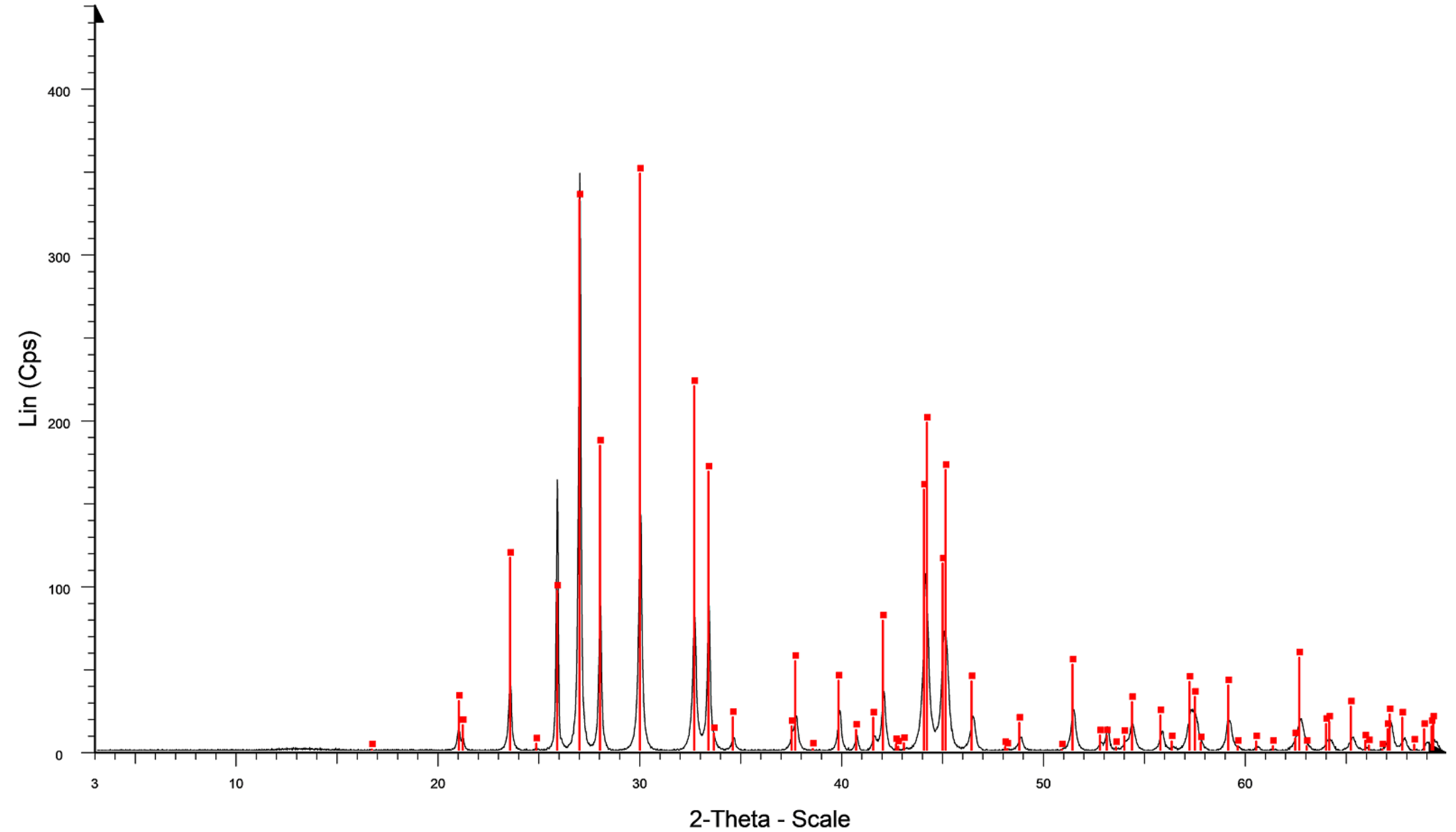


St-005A



☐ C003A - File: C003A.RAW - Type: 2Th/Th locked - Start: 3.000 ° - End: 69.930 ° - Step: 0.020 ° - Step time: 141. s - Temp.: 25 °C (Room) - Time Started: 22 s - 2-Theta: 3.000 ° - Theta: 1.500 ° - Chi: 0.00 °
Operations: Strip kAlpha2 0.500 | Background 1.000,1.000 | Import
☐ 01-080-0523 (C) - Celestite, syn - Sr(SO4) - Y: 100.00 %